

# INSTRUCTIONS FOR: 3 PIECE HEARTH & 3 PIECE SURROUND KIT

## TOOLS NEEDED:

Circular Saw or Angel Grinder with masonry/diamond blade (if cutting side of filler/surround panels to proper height is required), Level; screwdriver; drill #8 to #12; 2" long screws – 12 ea.; 3/16" drill bit; caulking gun; 1 tube of premium polyurethane construction grade adhesive.

## DRY FIT PRIOR TO INSTALLATION IS RECOMMENDED

### STEP 1: HEARTH Fig. 1-1; Fig 1-2

1. Center up "center section" of 3 pc. hearth set in front of fireplace and mark floor.
2. Remove center hearth section. Apply generous portion of adhesive to floor in area for hearth. Replace center section of hearth in area previously marked. Push tight against wall.
3. Place right and left hearth sections. Push tightly against wall and firmly in place against center section.
4. Grout the joints if you wish.

### STEP 2: SIDE SURROUND/FILLER PANELS Fig. 1-3

1. Mark and cut side panels to correct height based on where you want top filler/surround panel to rest above firebox. Dry fit with cut side down.
2. Drill screw hole in the top – outside edge of filler panel. (The area that will be behind the actual leg of your Thin Cast Stone Mantel).
3. Apply adhesive to back side of panel; push tight against wall; secure with screw.

## BE CAREFUL NOT TO OVER TIGHTEN SCREW. JUST LIGHTLY SNUG.

### STEP 3: TOP SURROUND/FILLER PANEL Fig. 1-4

1. Position panel above side panels. Cutting should not be required.  
**ON WELLINGTON, IT MAY BE NECESSARY TO CUT WIDTH OUT OF THE TOP FILLER PANEL IF YOU HAVE A TALL FIRE PLACE. IT IS POSSIBLE THAT THE CAVITY SPACE BEHIND WELLINGTON SURROUND WILL NOT ACCOMMODATE THE ENTIRE 14" WIDTH OF THE PANEL.**
2. Drill two screw holes, one each about 10" to left and right of center point, about 1" down from the top side edge of panel. (The portion that will go behind your Thin Cast Stone mantel header).
3. Apply construction adhesive to back side and press firmly in place. Secure with screws. Be careful not to over tighten screws.

## SEE MANTEL INSTRUCTIONS TO CONTINUE

QUESTIONS? 1-888-493-8898



MANTELSDIRECT.com

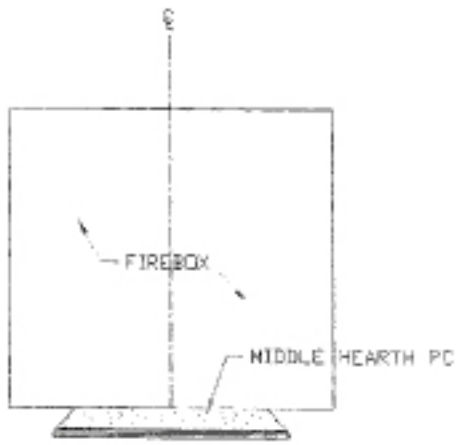


Fig. 11

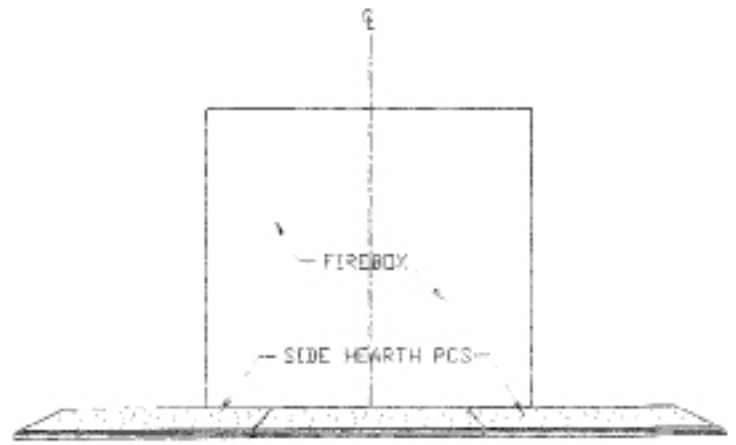


Fig. 12

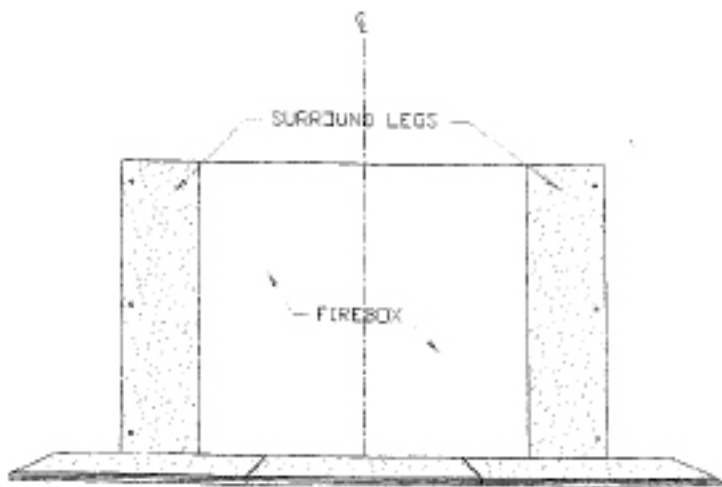


Fig. 13

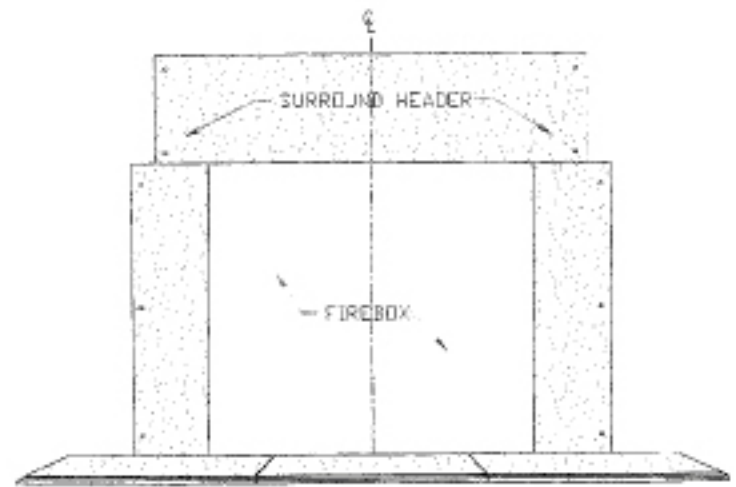
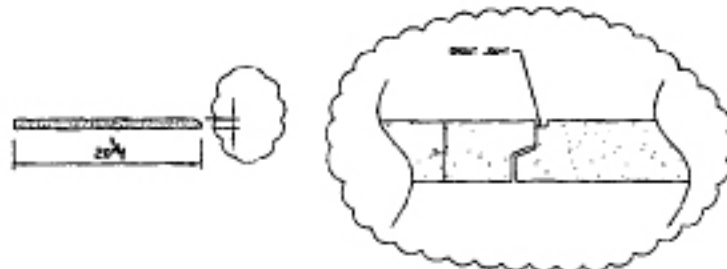
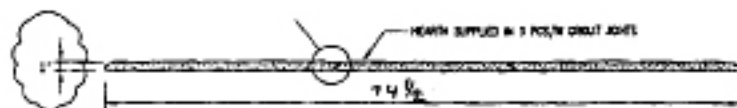
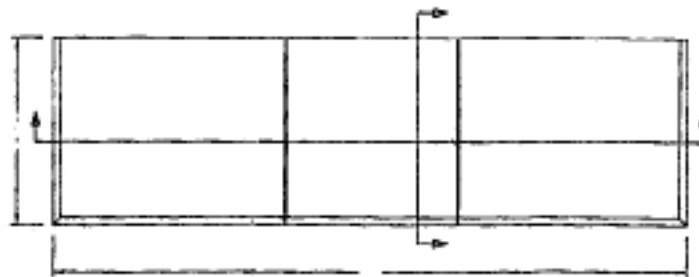


Fig. 14



# THIN CAST STONE INSTALLATION INSTRUCTIONS

## TOOLS NEEDED:

Drill; 3/16" Drill bit and countersink; #8 to #12 screws - 3" long and 2.25" long; level; caulking gun; construction grade polyurethane adhesive. Also need 1 ea. 50" long 2 x 4 mounting board

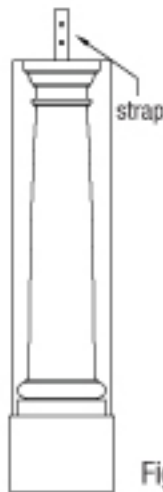


Fig. 1

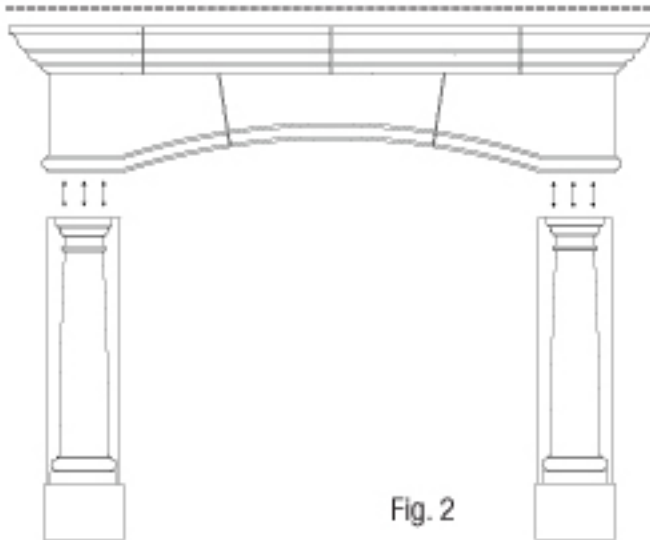
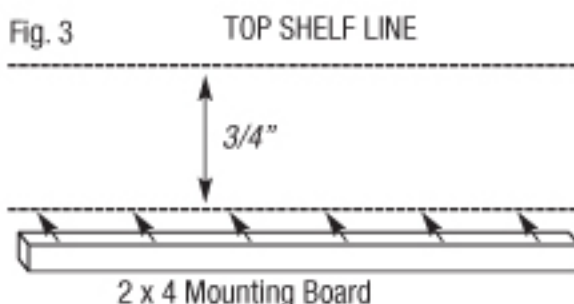


Fig. 2

Fig. 3



## STEP 1:

See mounting instructions for hearth and filler panels.

## STEP 2:

### *KINGTON AND EDINBOROUGH LEGS*

The outside top edge to outside top edge measurement for Kington legs is 70-7/8", or 35-7/16 from center line of hearth or fireplace.

### **ABINGTON** -

71-1/2" or 35-3/4" from center of hearth or fireplace. Slight adjusting of legs may be required. **DRY FIT ONLY AT THIS TIME.**

Align legs and temporarily secure in place with 2-1/4" screw through the tie strap into dry wall. The outside edge of each leg should be sitting on drywall while the inside edge of each leg is overlapping the side filler panels. Fig. 1

## STEP 3:

Two persons required in lifting top mantel section into place to avoid injury and damage.

Lift top mantel breast plate into place, resting on the top of legs. Check leg alignment and mark and adjust legs if needed.

With top shelf plate setting properly on legs and on wall, use the back part of the top shelf as a guide. Draw a line on sheetrock wall where top shelf plate meets wall. Fig. 2

Remove mantel breast plate.

## STEP 4:

Using the line drawn as instructed above, measure down from that line 3/4" and draw a 2nd line. Make sure this line is straight and level. Using this 2nd line that is 3/4" below top line, align top edge of 2 x 4 mounting board with the 2nd line and secure into wall with 3" screws screwing into wall studs where possible. Fig. 3

**STEP 5:**

Secure legs properly in place with adhesive and the strap.

**STEP 6:**

Pre-drill a screw hole with countersink through the "thick portion" of the top shelf plate. This hole should be 3/4" in from the back side of shelf plate. Repeat this step for other "thick portion" of shelf plate.

**STEP 7:**

Put adhesive on back side edges of mantel breast section. Lift mantel breast section back into place above legs. Perform a final check on leg alignment.

Using 2-1/4" screws, screw down through pre-drilled screw holes in top shelf plate. **DO NOT OVER TIGHTEN.**

**STEP 8:**

Using patch kit provided, make any touch up needed.

QUESTIONS? 1-888-493-8898



MANTELSDIRECT.com